

IoT

## Construction

Traditionally the adoption of new technologies in construction has been slow, but as it faces greater challenges the industry is turning to IoT technology for help.



### The challenge for the Construction Industry

The demand on the building sector is high, and construction firms are looking for a solution to deal with new challenges. With a growing population, increased challenges in sourcing materials, more complex projects requiring more efficient management as well as increased safety and improved environmental monitoring, and the emergence of IoT is proving the only way to meet these demands.

### Benefits of IoT technology in construction



#### Wearables

The use of 'smart safety helmets' to monitor health and 'connected work boots' to facilitate communication onsite are helping improve safety and management efficiency.



#### Safety

IoT sensors feeding real-time data to intelligent alerting and quick response software applications to prevent incidents and provide a safer working environment.



#### Theft Prevention

Connected drones and location sensors can be used for tracking equipment and even 'smart security fences' with sensors to monitor any attempted forced entry.



#### Environment Monitoring

IoT sensors monitoring air quality such as humidity, temperature and harmful chemicals can help manage the environmental impact of construction work while also providing data to better implement longer term sustainability plans.

### What is a Construction Industry IoT Solution?

Here are the 3 key elements:

#### THE HARDWARE

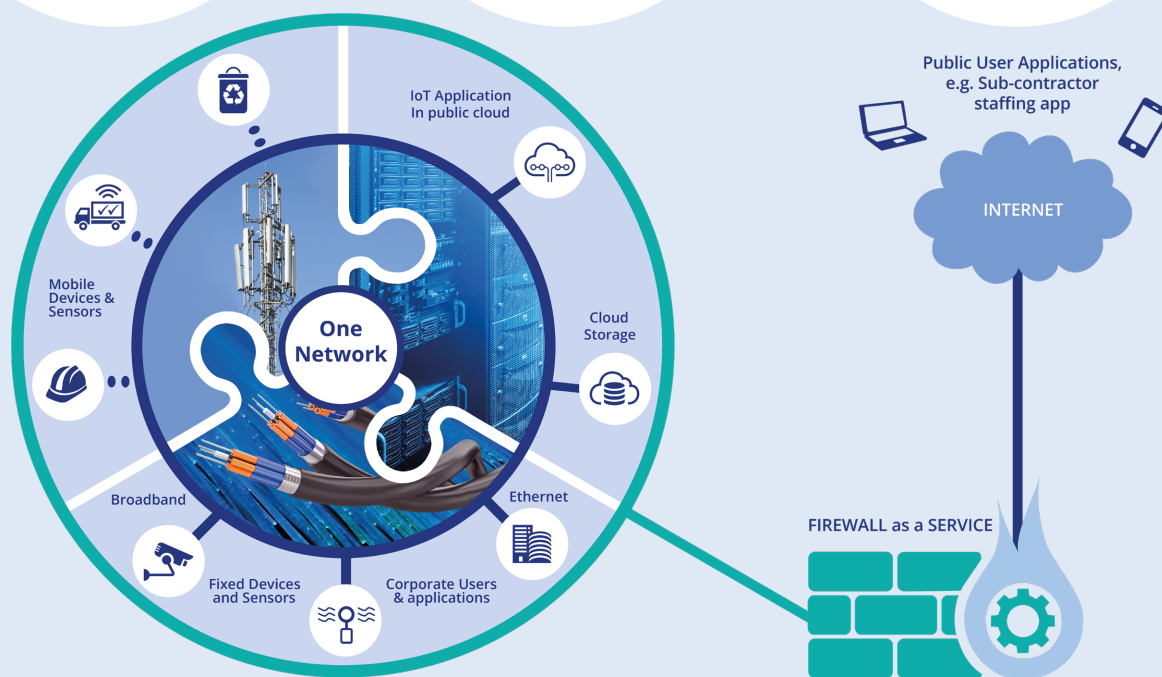
Sensors, devices and SIMs installed around the city to collect and record raw data.

#### THE CONNECTIVITY

The link between the hardware devices and the cloud based software applications using intelligent networking and data connectivity.

#### THE APPLICATION

Smart applications and data analytics which translates raw data into information, alerts and action presented in a management platform.



Let Spitfire simplify the process by offering a secure private MPLS network for your IoT solution, significantly reducing the time spent configuring and securing your data network:

- Highly secure by avoiding public internet traversal
- MPLS / Private APN networks available
- Fixed public and private IP addresses
- Avoid need for encryption
- Single provider for all connectivity
- Flexible pricing plans
- Single bill and point of contact
- Easy to manage and support

**One network, one supplier, one bill, one contract, one contact.**

**Sales 020 7501 3344 • Partner Services 020 7501 3150**  
**Innovative • Flexible • Reliable • Supportive • Cost Effective**